



Presses & Automation
SINCE 1975

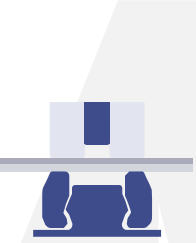


Clinching press
GEN E



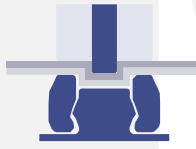
Azimuth Clinching press

GEN E Servo Clinching Press



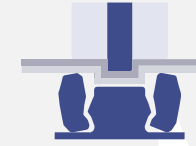
STEP 1 : CLAMP

The stripper clamps the sheet metal parts to be joined.



STEP 2 : DRAW

The punch draws the sheet metal into the die and the metals expand when they hit the die anvil.



STEP 3 : LOCK

The metals, unable to continue their downward expansion, are compressed against the anvil and are forced to expand laterally, forming an interlock below the bottom sheet. The die blades expand, allowing this interlock to occur.



Standard features

- Servo motorized – Fully electrical
- 5 years warranty – Best in Industry
- Up to 350SPM - Fastest in Industry
- Manual oiling system
- 120VAC-1PH
- Several frame sizes available

Optional features

- Stainless steel tooling
- Counter & timer for automatic mode
- Automatic Oiling system





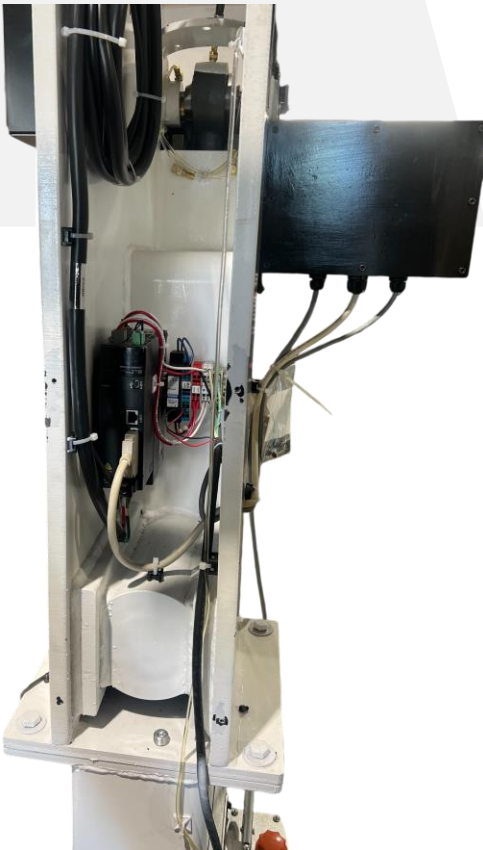
Azimuth Clinching press

GEN E Servo Clinching Press

Introducing our new, streamlined operator interface!

Designed with simplicity in mind, it makes switching between Full Stroke Mode and Pendulum Safety Mode effortless.

In Pendulum Safety Mode, the machine operates within 1/4" from the bottom, ensuring enhanced safety.



Additionally, the Manual Mode feature allows for easy jogging of the machine both forward and reverse, simplifying maintenance tasks. Enjoy greater control and ease of use with our latest upgrade.

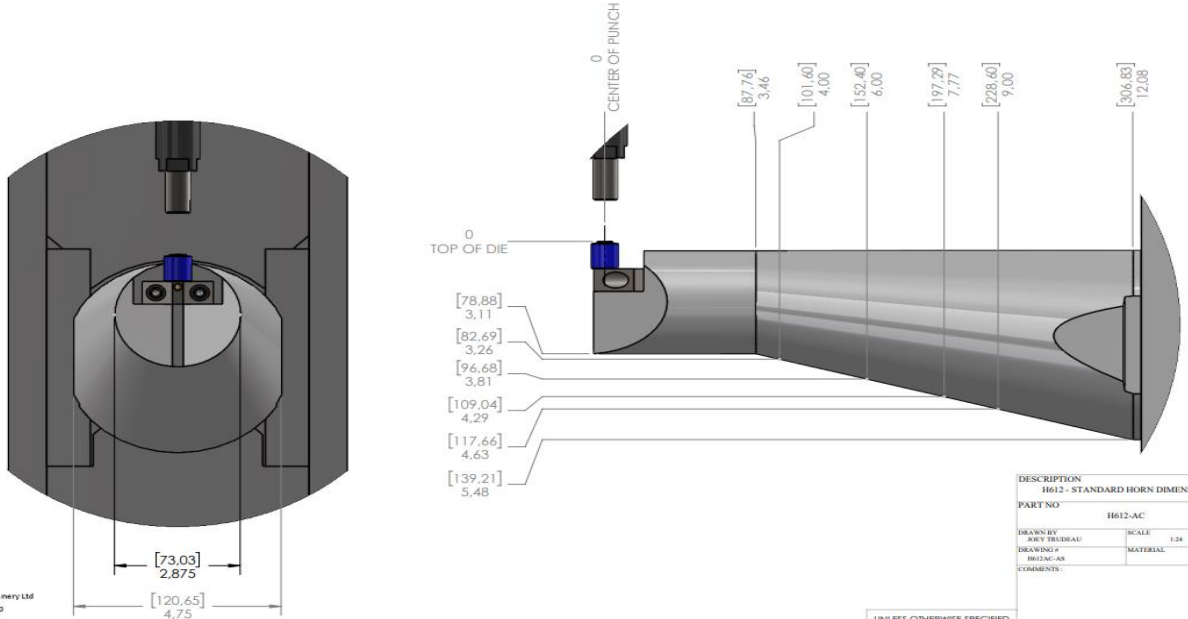
Our built-in controller allows a more compact machine





Azimuth Clinching press

H412/H612 standard arm & narrow arm

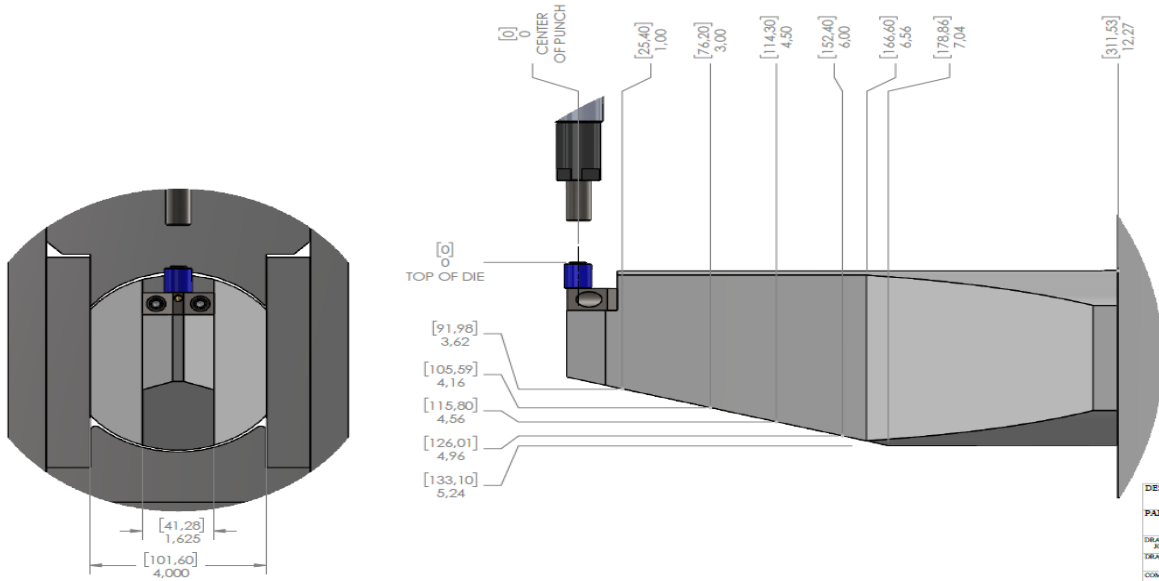


DESCRIPTION	
H612 - STANDARD HORN DIMENSION	
PART NO	H612-AC
DRAWN BY	ARY TREBDAJ
SCALE	1:24
DRAWING #	
MATERIAL	
COMMENTS	

UNLESS OTHERWISE SPECIFIED
 DIMENSIONS ARE IN INCHES
 TOLERANCES:
 FRACTIONAL ±1/64
 TWO PLACE DECIMAL ±.01
 THREE PLACE DECIMAL ±.005

PROPRIETARY AND CONFIDENTIAL
 THE INFORMATION CONTAINED IN THIS DRAWING IS THE SOLE PROPERTY OF AZIMUTH MACHINERY. ANY REPRODUCTION IN PART OR AS A WHOLE WITHOUT THE WRITTEN PERMISSION OF AZIMUTH MACHINERY IS PROHIBITED.

Z:\11_Ingénierie\2_Dessins\ENGINEERING DRAWING\1. PRESSE\DESIGN DE PRESSE\1. HORN\AC\H612.dwg



DESCRIPTION	
H612 - NARROW HORN DIMENSION	
PART NO	H612N-AC
DRAWN BY	ARY TREBDAJ
SCALE	1:24
DRAWING #	
MATERIAL	
COMMENTS	

UNLESS OTHERWISE SPECIFIED
 DIMENSIONS ARE IN INCHES
 TOLERANCES:
 FRACTIONAL ±1/64
 TWO PLACE DECIMAL ±.01
 THREE PLACE DECIMAL ±.005

PROPRIETARY AND CONFIDENTIAL
 THE INFORMATION CONTAINED IN THIS DRAWING IS THE SOLE PROPERTY OF AZIMUTH MACHINERY. ANY REPRODUCTION IN PART OR AS A WHOLE WITHOUT THE WRITTEN PERMISSION OF AZIMUTH MACHINERY IS PROHIBITED.

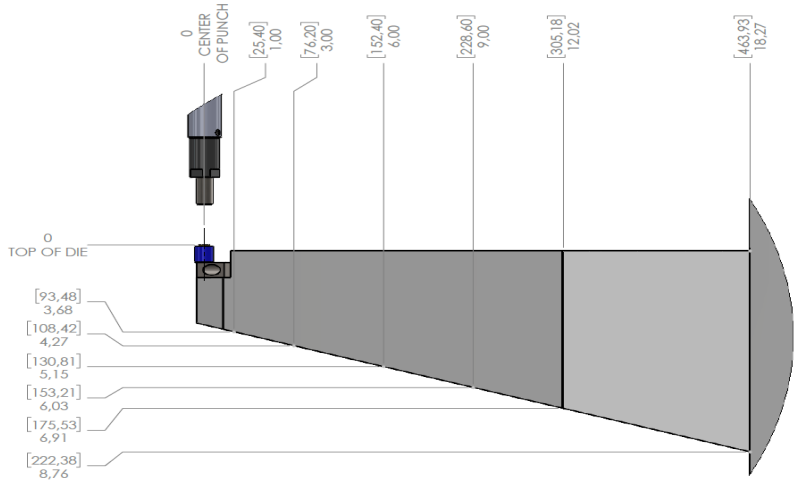
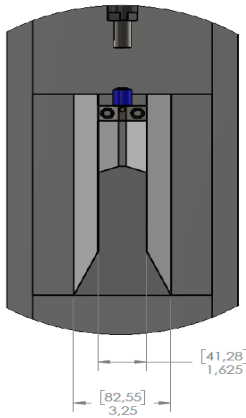
Z:\11_Ingénierie\2_Dessins\ENGINEERING DRAWING\1. PRESSE\DESIGN DE PRESSE\1. HORN\AC\H612N.dwg





Azimuth Clinching press

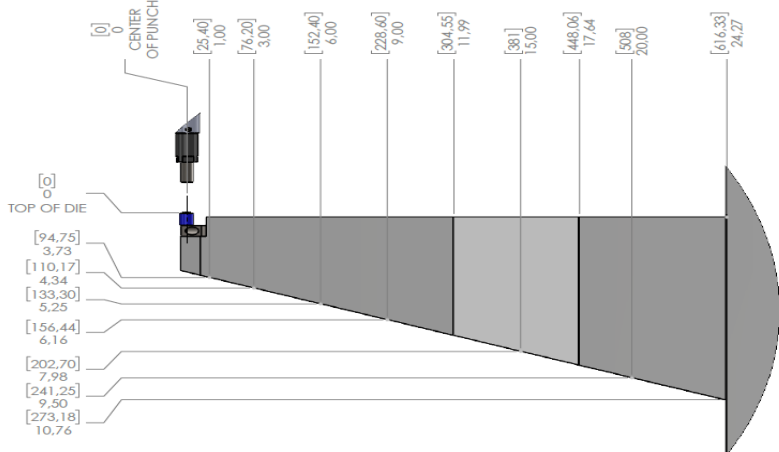
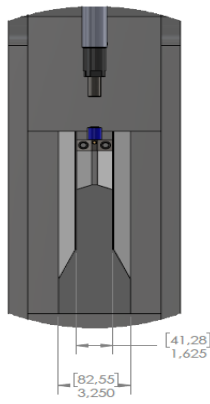
H618 & H624 narrow arm



DESCRIPTION H618 - HORN DIMENSION	
PART NO	H618-AC
DRAWN BY	JOEY TREDEAU
SCALE	1:24
DRAWING #	
MATERIAL	
COMMENTS:	
UNLESS OTHERWISE SPECIFIED	
DIMENSIONS ARE IN INCHES	
TOLERANCES:	FRACTIONAL ±1/64
	TWO PLACE DECIMAL ±.01
<small>PROPRIETARY AND CONFIDENTIAL THE INFORMATION CONTAINED IN THIS DRAWING IS THE SOLE PROPERTY OF AZIMUTH MACHINERY. ANY REPRODUCTION IN PART OR AS A WHOLE WITHOUT THE WRITTEN PERMISSION OF AZIMUTH MACHINERY IS PROHIBITED.</small>	

UNLESS OTHERWISE SPECIFIED
 DIMENSIONS ARE IN INCHES
 TOLERANCES:
 FRACTIONAL ±1/64
 TWO PLACE DECIMAL ±.01

Z:\1. Ingersoll/3-Drawings/ENGINEERING DRAWINGS/ PRESS/DESIGN DE PRESS/TREDEAU/AC/618-AC.dwg 005



DESCRIPTION H624 - NARROW HORN DIMENSION	
PART NO	H624-AC
DRAWN BY	JOEY TREDEAU
SCALE	1:24
DRAWING #	
MATERIAL	
COMMENTS:	
UNLESS OTHERWISE SPECIFIED	
DIMENSIONS ARE IN INCHES	
TOLERANCES:	FRACTIONAL ±1/64
	TWO PLACE DECIMAL ±.01
<small>PROPRIETARY AND CONFIDENTIAL THE INFORMATION CONTAINED IN THIS DRAWING IS THE SOLE PROPERTY OF AZIMUTH MACHINERY. ANY REPRODUCTION IN PART OR AS A WHOLE WITHOUT THE WRITTEN PERMISSION OF AZIMUTH MACHINERY IS PROHIBITED.</small>	

UNLESS OTHERWISE SPECIFIED
 DIMENSIONS ARE IN INCHES
 TOLERANCES:
 FRACTIONAL ±1/64
 TWO PLACE DECIMAL ±.01

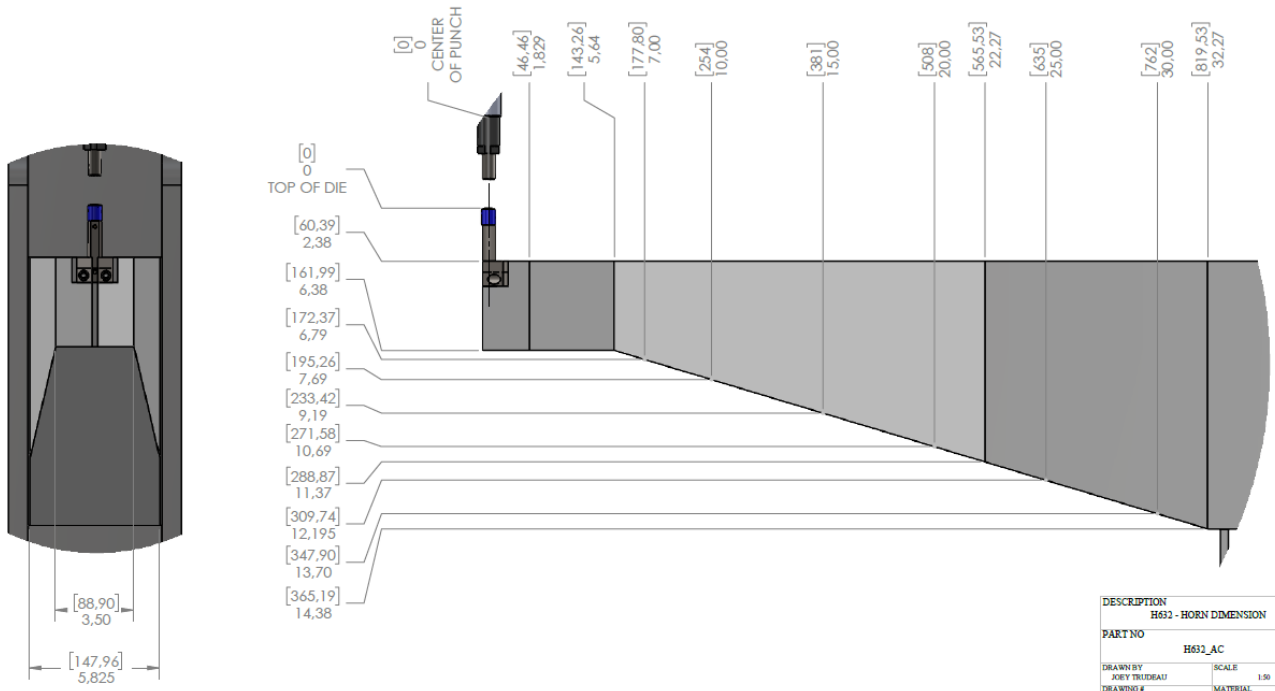
Z:\1. Ingersoll/3-Drawings/ENGINEERING DRAWINGS/ PRESS/DESIGN DE PRESS/TREDEAU/AC/624-AC.dwg 005





Azimuth Clinching press

H632 narrow arm



DESCRIPTION	H632 - HORN DIMENSION
PART NO	H632_AC
DRAWN BY	JOEY TREDEGAR
DRAWING #	MATERIAL
SCALE	1:50
COMMENTS	

UNLESS OTHERWISE SPECIFIED
 DIMENSIONS ARE IN INCHES
 TOLERANCES:
 FRACTIONAL ±1/64
 TWO PLACE DECIMAL ±.01

PROPRIETARY AND CONFIDENTIAL
 THE INFORMATION CONTAINED IN THIS DRAWING IS THE
 SOLE PROPERTY OF AZIMUTH MACHINERY. ANY
 REPRODUCTION IN PART OR AS A WHOLE WITHOUT THE
 WRITTEN PERMISSION OF AZIMUTH MACHINERY
 IS PROHIBITED.

Z:\1. Ingénierie\0. Dessins\ENGINEERING DRAWINGS\ PRESSES\DESIGN DE PRESSE\TWO PLACE DECIMAL\H-005





Azimuth Clinching press

GENE

The first fully electrical servo motorized clinching press in the industry, our GEN E now meets speed of operation, safety standards & consistency within your clinching joints.

Backed up with an outstanding 5 years warranty, you won't have to worry about your clinching unit for a very long time.



EASY INSTALLATION

Fully electrical 120VAC



INCREASED PRODUCTIVITY

Easily change tooling for
different thickness



FASTEST MACHINE IN THE INDUSTRY

up 350 strokes per minutes



SAFETY STROKE

Safety stroke allows the
operator to operate with
shorter stroke



SELF MONITORING SYSTEMS

Built-in procedure for easy
maintenance of the machine
& adjustment



TROUBLE FREE

5 years warranty





CLINCHING PROCESS

STEP 1 : CLAMP

The stripper clamps the sheet metal parts to be joined.



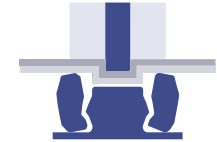
STEP 2 : DRAW

The punch draws the sheet metal into the die and the metals expand when they hit the die anvil.



STEP 3 : LOCK

The metals, unable to continue their downward expansion, are compressed against the anvil and are forced to expand laterally, forming an interlock below the bottom sheet. The die blades expand, allowing this interlock to occur.



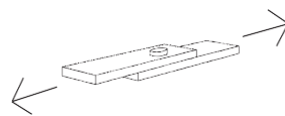
ADVANTAGES

- Vibration-Resistant & Leak proof
- Do not destroy material coating
- Consistent & reliable joint
- May join different thicknesses together
- Long tool life of approximately 300,000 cycles

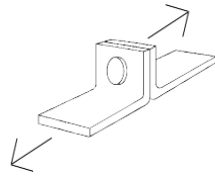
CAN MY MATERIAL BE CLINCHED ?

Mild Steel (galvanized, pre-painted material) or Aluminum are standard materials. Stainless steel & multiple layers of material requires optional tooling.

Joint STRENGTH



FROM 225 lbs. (thinner material) to 600 lbs (thicker material)



FROM 30 lbs. (thinner material) to 250 lbs (thicker material)

Send us your samples today
for a free evaluation





WARRANTY PLAN Clinching Press

5

Year's servo, drive & Gear-head, PLC & electrical components warranty

Azimuth machinery warrants to the original purchaser, to repair or, at AZIMUTH MACHINERY'S sole option, replace any major servo failure, servo drive & gear head & ALL Electrical components (greaser, oiler, motor, main controller, sensors or buttons) after examination by AZIMUTH MACHINERY's properly authorized representative, to be defective in material or workmanship under normal use within three (3) years or, if sooner, **5,000,000 strokes** after the original date of shipment from the AZIMUTH MACHINERY plant.

Does not include labor^[1] or diagnostic work. The original purchaser will be responsible for travel costs and expenses.

3

Years mechanical parts warranty (Frame, mechanical components)

Azimuth machinery warrants to the original purchaser, to repair or, at AZIMUTH MACHINERY'S sole option, replace any parts that are found defective (Ball-screw, pitman(s), crankshaft(s), slide, GIBS, RAM, after examination by AZIMUTH MACHINERY's properly authorized representative, to be defective in material or workmanship under normal use within three (3) years or, if sooner, **3,000,000 strokes** after the original date of shipment from the AZIMUTH MACHINERY plant.

Does not include labor^[2] or diagnostic work. The original purchaser will be responsible for travel costs and expenses.

∞

Lifetime support over phone & online videos

Azimuth machinery offers lifetime support to all its end-users. This means free support over phone & access to online videos for technical support & maintenance tips on new machine.



